



**3 YEARS WARRANTY**  
**PARTS & LABOR**

# SPIKA NG 215

115 V / 60 Hz

## SELF-CONTAINED ICE CUBE MACHINE

### FEATURES

- ▶ PRODUCES FULL DICE ICE CUBES OR HALF DICE ICE CUBES
- ▶ STIF: STRONG INOX FRAME. SOLID MACHINE STRUCTURE IN 4 COLUMNS WITH AISI 304 STAINLESS STEEL FRAME
- ▶ STRONGEST DOOR IN THE MARKET. MADE OF STAINLESS STEEL. OPENING AND DAMPING SYSTEM PATENTED BY ITV.
- ▶ FRONT VENTILATION CONCEPT: FRONTAL IN-OUT AIR SYSTEM ALLOWS 'BUILT IN' MACHINES
- ▶ CLEANING SWITCH: ALLOWS CIRCULATION OF WATER WITH DESCALING PRODUCT (CALKIN OR SIMILAR) WITHOUT COOLING.
- ▶ "NEVER STOP" MOTOR PUMP DEVELOPED BY ITV. PUMP WITHOUT SEALS, WHICH AVOIDS DETERIORATION IN HARD WATER
- ▶ EASI: EASY ACCESS FOR SERVICE & INSTALLATION. ALL PANELS CAN BE DISASSEMBLED SEPARATELY.
- ▶ ON/OFF LIGHTED ROCKER SWITCH IN FRONT PANEL
- ▶ TROPICALIZED MACHINES (T CLASS) / HEIGHT ADJUSTABLE LEGS FROM 37" TO 39"



	24 H	70°F/21°C    50°F/10°C	90°F/32°C    70°F/21°C	<b>STOCK</b>	in (mm)	in (mm)	<b>SPIKA HALF DICE</b> 0,9" (W) x 0,4" (D) x 1" (H) 23 mm (W) x 11 mm (D) x 26 mm (H) Average dimensions
SPIKA NG 215 A	226 (103)	185 (84)	77 (35)	Width 26" (600) Depth 28" (700) Height* 33" (838)	Width 29" (745) Depth 30" (770) Height 38" (970)	<b>SPIKA FULL DICE</b> 1" (W) x 0,9" (D) x 1" (H) 26 mm (W) x 23 mm (D) x 26 mm (H) Average dimensions	
SPIKA NG 215 W	226 (103)	185 (84)					

\* WITH LEGS 37"/39"

### ACCESSORIES

#### INCLUDED



WATER OUTLET HOSE



4 HEIGHT ADJUSTABLE LEG KIT



SCOOP

#### NOT INCLUDED (OPTIONAL)



10" FILTER  
ANTI-LIMESCALE + ANTI-CHLORINE  
CS-101 K



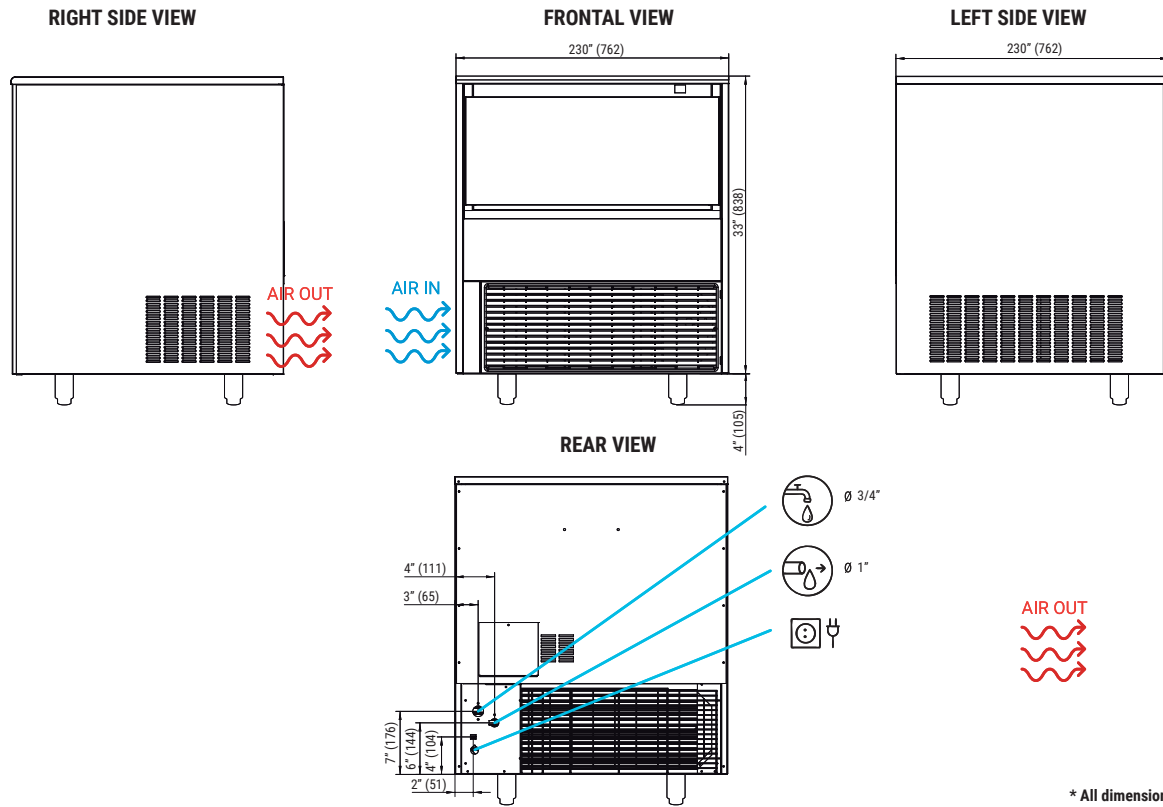
10" REPLACEMENT CARTRIDGE  
ANTI-LIMESCALE + ANTI-CHLORINE  
CS10



SCALE KLEEN

# TECHNICAL SCHEME

SPIKA NG 215



\* All dimensions in inches (and mm)

## OPERATING CONDITIONS

### PRODUCTION (LBS) 60Hz

±10% V

41°F/109°F

41°F/95°F

14,5 psi (1 bar) / 87 psi (6 bar)

120/240 Ice cubes/cycle



V	Hz	ph
115	60	1N

24 H	FULL DICE SPIKA NG 215 AIR COOLED					FULL DICE SPIKA NG 215 WATER COOLED				
	50° 10°	60° 15°	70° 21°	86° 30°		50° 10°	60° 15°	70° 21°	86° 30°	
50° 10°	233	221	204	183		233	221	204	183	
68° 21°	226	214	197	176		226	214	197	176	
90° 32°	215	203	185	164		215	203	185	164	
109° 43°	202	191	172	149		202	191	172	149	

## MODELS

	ASHRAE CONDITIONS (BTU/h) (W)	(W) 109°F	(AWG/mm <sup>2</sup> ) (n.)	FUSE	100lbs 90°F / 70°F (Kwh/100 lbs)	gal 100lbs (l/h)	HEAT REJECTED (BTU/h) (W)	(lbs)	(lbs)
SPIKA NG 215 A	5,405 1,584	640	14/1,5	3	15	7,21	19,5 16,4	4,333 1,270	157 179
SPIKA NG 215 W	5,405 1,584	640	14/1,5	3	15	5,26	114,5 61,8	4,333 1,270	157 179



ITV Ice Makers, Inc.  
9550 Satellite Blvd, Suite 100  
Orlando, FL 32837  
Phone: 1 407 826 1860 | Fax: 1 407 826 1861  
Toll Free: 1 888 488 1423  
sales@itvice.com | www.itvice.com



SERVICE  
service@itvice.com  
Skype: service@itvice.com  
PHONE: +1 888 488 1423  
FROM 8AM TO 5PM EST



2 ADDITIONAL YEARS  
ON COMPRESSOR &  
EVAPORATOR  
Read our warranty policy  
to know more about  
limitations and exclusions

